



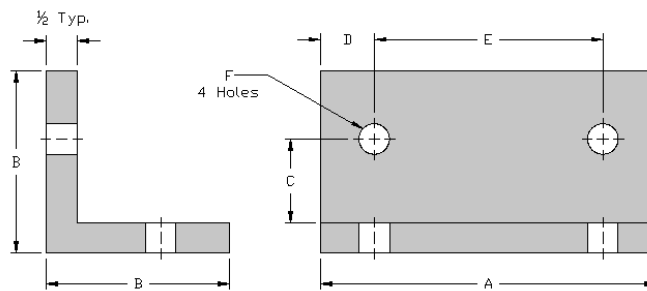
DURAVAR®

Waste Water Treatment Wearshoes

Ultra-High Molecular Weight Polyethylene

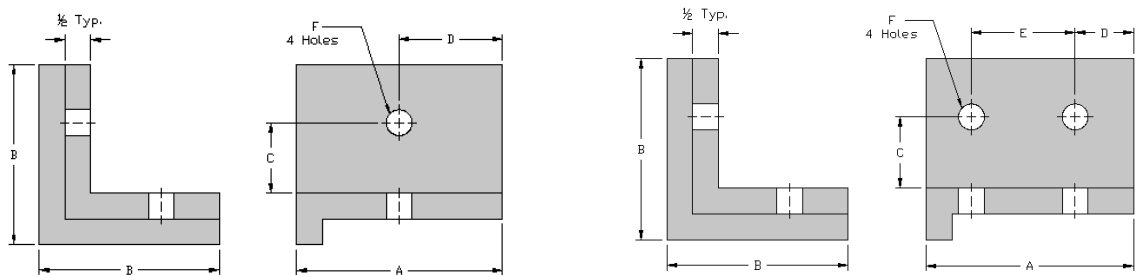
Duravar® Carrying Wear Shoe

PRODUCT CODE	A (IN.)	B (IN.)	C (IN.)	D (IN.)	E (IN.)	F (IN.)
WW-CWS1001	5-1/2"	3"	1-5/16"	7/8"	3-3/4"	1/2"
WW-CWS1550	5-1/2"	3"	1-3/8"	7/8"	3-3/4"	1/2"
WW-CWS1600	6"	3"	1-3/8"	1-1/8"	3-3/4"	1/2"



Duravar® "Single Hole" Return Wear Shoe

PRODUCT CODE	A (IN.)	B (IN.)	C (IN.)	D (IN.)	E (IN.)	F (IN.)
WW-RWS2001	4"	3-1/2"	1-5/16"	2"	3-3/4"	-
WW-RWS2450	4"	3-1/2"	1-3/8"	2"	3-3/4"	-
WW-CWS2550	4-1/2"	3-1/2"	1-3/8"	2-1/4"	3-3/4"	-



Duravar® "Double Hole" Return Wear Shoe

PRODUCT CODE	A (IN.)	B (IN.)	C (IN.)	D (IN.)	E (IN.)	F (IN.)
WW-RWS3400	4"	3-1/2"	1-3/8"	7/8"	2"	1/2"
WW-RWS3450	4-1/2"	3-1/2"	1-3/8"	7/8"	1"	1/2"
WW-RWS3600	6"	3-1/2"	1-3/8"	1-1/8"	3-3/4"	1/2"